

MK 32L-115

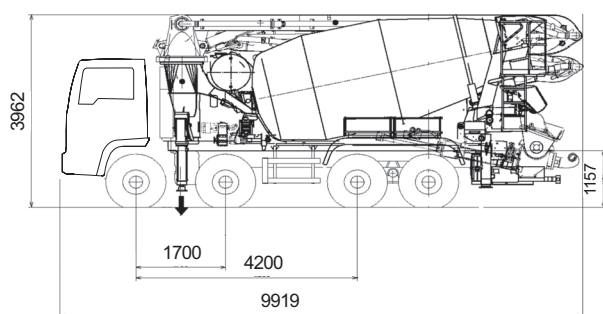
TRUCK-MIXER PUMP "MAGNUM" MK 32L-115

Placing Boom
Pumping Unit
Concrete Mixer
Driven by
Chassis

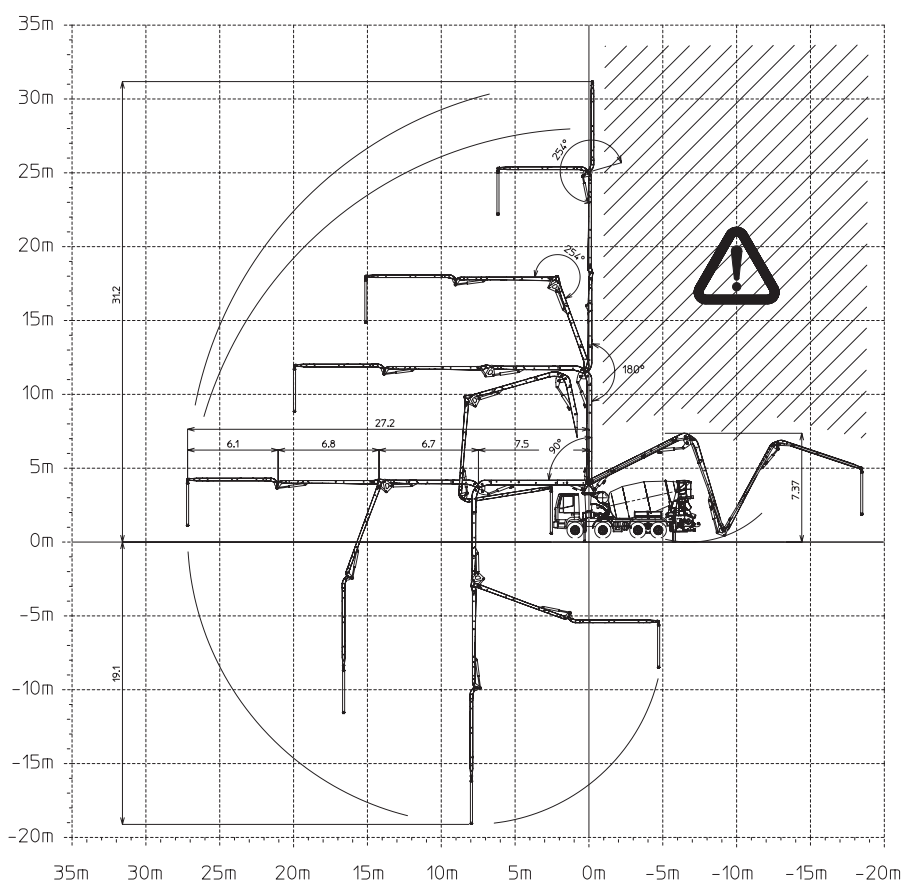
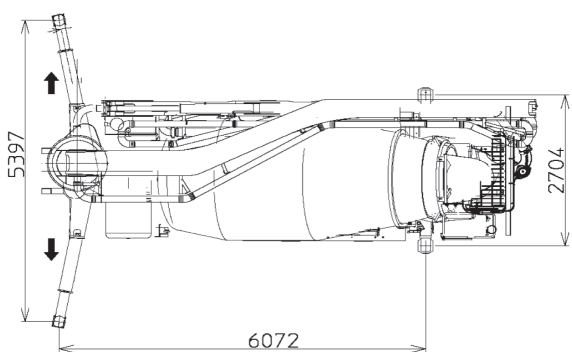
MK 32 L
PB 806 S7, PB 607 S7
RH-RHS 115
PTO-Coupler-Separate engine
4 axles



Dimensions



Dimensions varying according to truck assembly



MK 32L-115

Main features

- Compact and harmonic line, studied for assembling on 4 axes chassis
- **Chassis** at extremely high torsion absorption, calculated according to Finite Elemental Methods (FEM)
- Ideal load distribution on the axles to obtain better driving stability
- **Outriggers** fully hydraulic controlled on both machine sides with front telescopic double extension at automatic patented sequence and fixed rear outriggers.
- Great loading capacity drum with elliptic bottom, in high wear resistant steel of 30 MnB5
- **Placing boom MK 32L**, 4 sections, pipeline diameter 100 mm, "Z" folding system
- **CIFA Pumping unit** with 7" valve of high concrete suction performances and filling ratio, less wearing, improved and optimised shape to reduce wearing and diesel fuel consumption
- Proportional boom control
- "BFC" Best-Flex Cifa supporting system which allows quick, easy and safe pipeling changing by just one worker
- Concrete flow regulator
- Safety device at concrete discharging door opening
- Noiseless pumping with high performances: smooth, continuous and easy movements
- Reduction 5"-4" 3000 mm length to decrease pumping pressure and wearing

Standard equipment

- 2 Proportional radio remote control with two boom movement speed, synthesiser for automatic frequency search, 8 position joy stick and concrete flow rate regulator. 20 mt cable
- Vibrator on the concrete hopper grid with remote control
- Centralized lubrication system for pumping unit
- Oil automatic lubrication system for pumping pistons
- Additional manual lubrication system for pumping unit
- Hard plastic outrigger support plates with relevant housing
- Light for pumping unit hopper
- Accessories for cleaning and washing
- Automatic adjustment feeler of truck-mixer discharge into hopper

Optionals

- Concrete pipes with double thickness, in high wear resistant steel
- Continuous boom rotation
- Cone-shaped discharging chute with end-cone dia. 200 mm
- Further 2 additional chute sections (supplied loose)
- Manual greasing system for reducer, rollers and rolling ring
- Automatic centralized greasing system for boom
- Emergency set of hydraulic pipeline
- Dispositif "Ekos-B" pour contenir le béton sur les routes en cote
- Rubber protection between mudguards and chassis
- Reversible chute

TRUCK-MIXER PUMP "MAGNUM" MK 32L-115

Placing Boom	MK 32L
Pumping Unit	PB 806 S7, PB 607 S7
Concrete Mixer	RH-RHS 115
Driven by	PTO-Coupler-Separate engine
Chassis	4 axes

Concrete Mixer Technical data

MODEL		115
Nominal capacity	m^3	10
Drum geometric volume	m^3	14,6
Filling ratio	%	69
Max. drum speed	$r.p.m.$	14
Water tank capacity	l	800
Water pump flow rate - Pressure	$l/min-bar$	230/15
Liter-counter scale	l	0-500

Pumping unit technical data

MODEL		PB 607 S7	PB 806 S7
Max. theoretical output	m^3/h	61	81
Max. pressure on concrete	bar	71	56
Max. number of cycles per minute	n°	32	43
Concrete cylinders (diam. x stroke)	mm	200x1000	200x1000
Concrete hopper capacity	l	400	400
"S" valve diameter	"	7	7

Placing boom technical data

MODEL		MK 32L
Pipeline diameter	mm	100
Max. vertical reach	m	31,2
Max. horizontal distance	m	27,2
Section numbers		4
1st section opening angle		90°
2nd section opening angle		180°
3rd section opening angle		254°
4th section opening angle		254°
Rotating angle		370°
End hose length	m	4

Technical data and characteristics subject to modifications without notice